

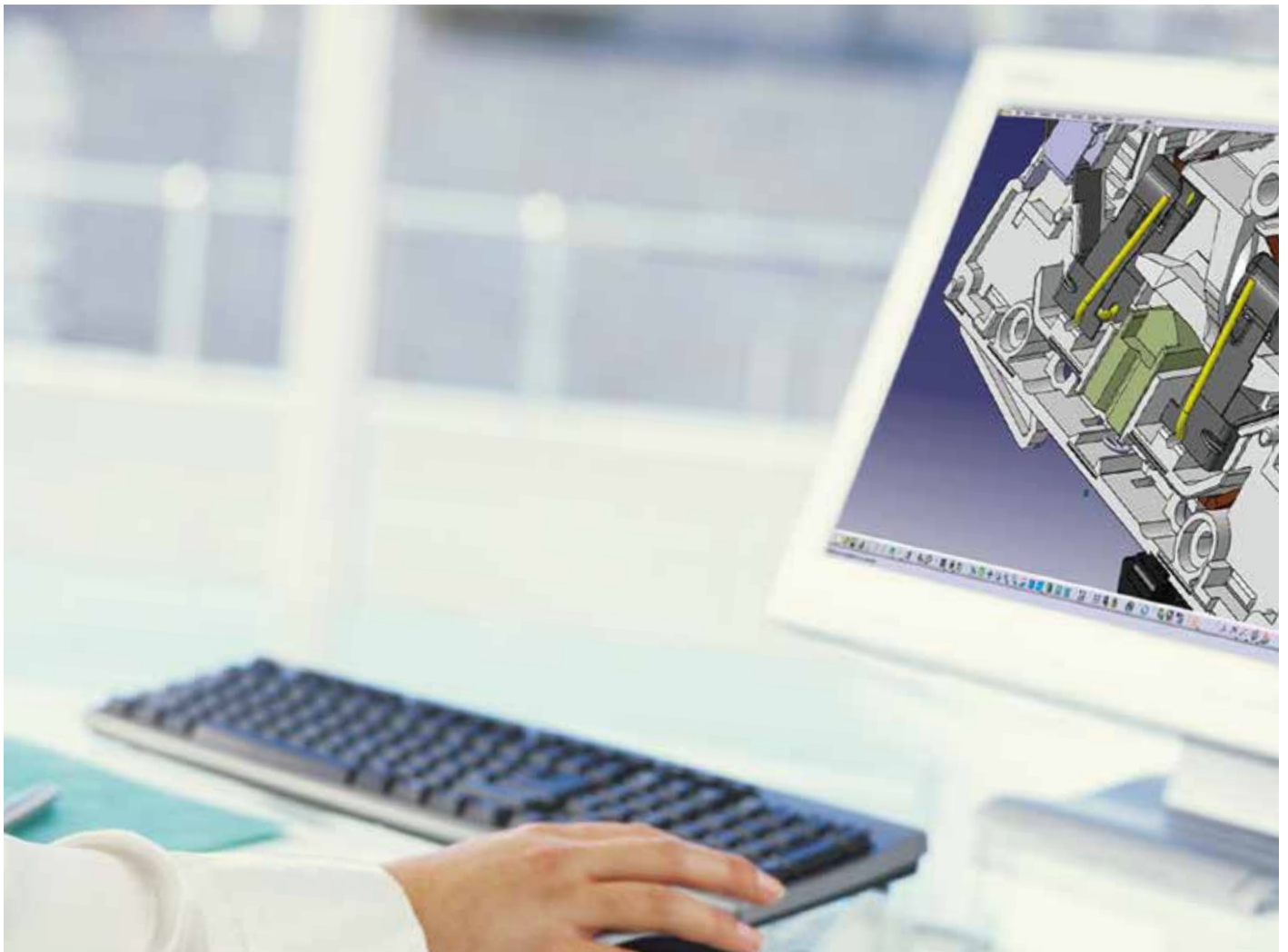


E 90 range of fuse disconnectors
and fuseholders
Uncompromising performance

Designing simplicity

ABB competence serving the most demanding customers

Suitability for disconnection and switching, effective heat dissipation and certified compliance with several international standards are mandatory requirements to meet the needs of the most demanding customers. ABB has dedicated its designers' passion, competence and creativity to the development of E 90 range of disconnectors and fuseholders, of E 90 50/125 series designed to ensure isolation and protection of circuits in big industrial plants, E 90 CC and E 90 J series specifically designed for the NAM markets. The result is the first AC-22B fuse disconnecter, certified up to 32 A by the most outstanding marks and approvals all over the world.



The new ABB standard Certified according to the most important international marks



A passport to the world.
International quality marks, naval type-approvals and UL certification
make E 90 the ideal range for designers and manufacturers of
switchboards and installations “without frontiers”.

E 90 range

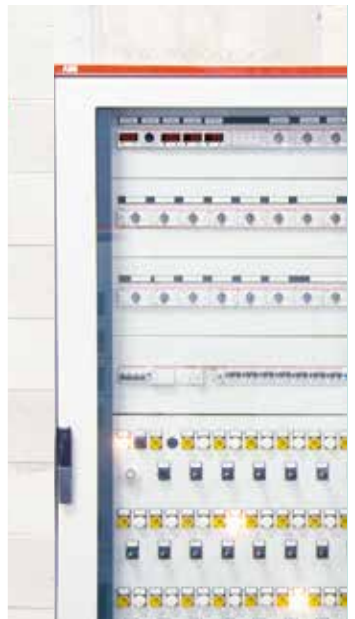
Designed by ABB for the most demanding customers

Industrial automation E 90 fuse switch disconnectors

- One module per pole
- Versions 1, 1N, 2, 3, 3N, 4
- AC-22B according to IEC 60947-3
- Rated current 20 A and 32 A
- Rated voltage 400 V AC-22B and 690 V AC-20B
- Can be equipped with 8.5 x 31.5 mm and 10.3 x 38 mm aM and gG fuses
- Designed for isolation and switching under load and for protection of secondary circuits of industrial plants
- All the versions are available with optical blown fuse indicator
- Compatible with ABB busbars of S 200 series and Unifix plug-in system
- cURus certification

Distribution switchboards E 90h fuseholders

- One pole plus neutral in one module
- Versions 1N, 3N
- Certified according to IEC 60269-3
- Rated current 20 A and 32 A
- Rated voltage 400 V AC
- Can be equipped with 8.5 x 31.5 mm and 10.3 x 38 mm aM and gG fuses
- Designed for instruments and auxiliaries protection in switchboards and consumer units
- All the versions are available with optical blown fuse indicator
- Compatible with ABB busbars of SN 201 series and Unifix plug-in system



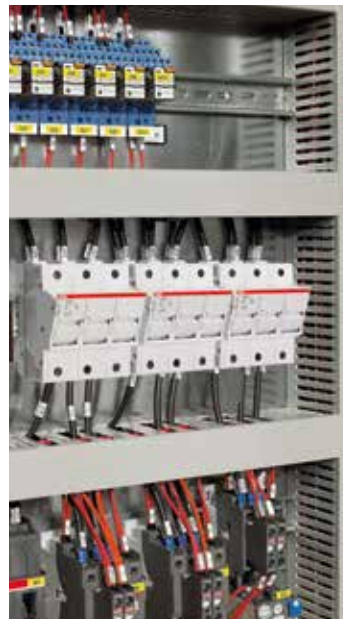
Photovoltaic installations E 90 PV fuse disconnectors

- One module per pole
- 1 and 2-pole versions
- DC-20B according to IEC 60947-3
- Rated current 32 A
- Rated voltage 1000 V DC
- Can be equipped with 10.3 x 38 mm gPV fuses
- Designed for isolation and protection of circuits in photovoltaic installations up to 1000 V DC
- All the versions are available with optical blown fuse indicator
- Certified according to UL 4248-18



Industrial circuit protection E 90 50/125 fuse-disconnector/fuseholder

- Versions 1, 1N, 2, 3, 3N
- AC-20B according to IEC 60947-3
- Rated current 50 and 125 A
- Rated voltage 690 V AC
- Can be equipped with any type of cylindrical fuses 14x51 (E 90/50) and 22x58 mm (E 90/125)
- Specifically designed for industrial circuit protection
- All the versions are also available with optical blown fuse indicator
- Certified according to UL 4248-1



E 90 range

Designed by ABB for the most demanding customers

For the American market E 90 CC fuseholders

- One module per pole
- Versions 1, 1N, 2, 3, 3N, 4 poles
- Rated current 30 A
- Rated voltage 600 V AC/DC
- Can be equipped with Class CC fuses
- All the versions are available with optical blown fuse indicator
- Certified according to UL 4248-4
- Rejection member feature according to UL 4248-4

Industrial installation in the NAM market E 90 30/60 J fuseholders

- 1, 2 and 3 poles versions
- Rated current 30 and 60 A
- Rated voltage 600V AC
- Can be equipped with Class J fuses
- All the versions are also available with optical blown fuse indicator
- UL listed according to UL 4248-8



Choosing the best ABB experience sets a new leading-edge performance standard

Tip-top performance

E 90 fuseholders with rated current up to 32 A can be used in any applications where you need to ensure electrical protection, isolation and switching under load of inductive or resistive loads in compliance with IEC 60947-3 Standard. Utilization category of this series is AC-22B up to 400V. The technology solutions applied to reduce power dissipation help to minimize module heating.

Completeness

The fuse tripping can be easily displayed, thanks to the special blown fuse indicator light.



Ease of installation.
E 90 fuseholders are fully compatible
with the Unifix-L wiring system

Reliability

Venting grooves and cooling chambers improve heat dissipation even in multiple-pole configurations. The reduced operating temperature inside fuseholders ensures durability and reliability of the devices over time.

Compactness

The compact dimensions enable to close the switchboard door even when the fuseholder is open, thus ensuring total safety during maintenance.

1P+N versions in one module only and 3P+N in three modules only are available.

Universal use

Screw holes have increased diameter to accommodate insulated screwdrivers and electric screwdrivers. In addition, with the Pozidrive PZ2 screws tightening can be performed by exerting less torque than conventional screws, and the same electric screwdriver can be used for all terminals. Moreover, the PS connection busbars facilitate the connecting operations, making the wiring both simple and safe and providing complete integration with S 200 and SN 201 System pro M compact® circuit-breakers.



E 90 safe and smart range is designed for quick, flexible and error-proof installation, to ease the everyday use of devices. Thanks to its unique features, E 90 series sets a new safety standard.

Reliable connections

Wide terminals allow the use of cables with section up to 25 mm², whereas the antivibration knurling on the terminal cages ensures safe and reliable connections.



Ease of use

Fuseholder profile has been designed for maximum ease of use: the 90° flip hinge with ergonomic knob, makes the replacement of fuses easier even in small spaces or when wearing protective gloves.



Safety

To ensure protection and safety during maintenance operations and avoid any accidental switching, fuseholders can be sealed in closed position, and padlocked in open position. The protection degree is IP20 when the unit is installed behind the switchboard slotting.



Environmental protection.

The fuseholders are compliant with RoHS (Restriction of Hazardous Substances) European directive, which prohibits the use of hazardous substances in the manufacture of electrical and electronic equipment.

Smart protection for installations with E 90s

The whole E 90 series is available with optical blown fuse indicator light. In particular E 90s PV is the first fuse disconnecter for photovoltaic installations with optical blown fuse indicator, which efficiently monitors DC installations up to 1000 V.

Flexible

E 90: 24 to 690 V operation in AC networks. Can be powered from both the load side and the supply side.

E 90 PV: 24 to 1000 V operation in DC networks with upstream supply.

Simple

No need for auxiliary supply or specific wiring.

Effective

Local fuse tripping signal. Allows the faulty phase to be immediately detected.



Results you can trust High performance of E 90 fuse disconnectors



E 90 protection and control

A range developed for automation and industry

Applications

- Automation switchboards
- On-board switchboards
- OEM

Main functions:

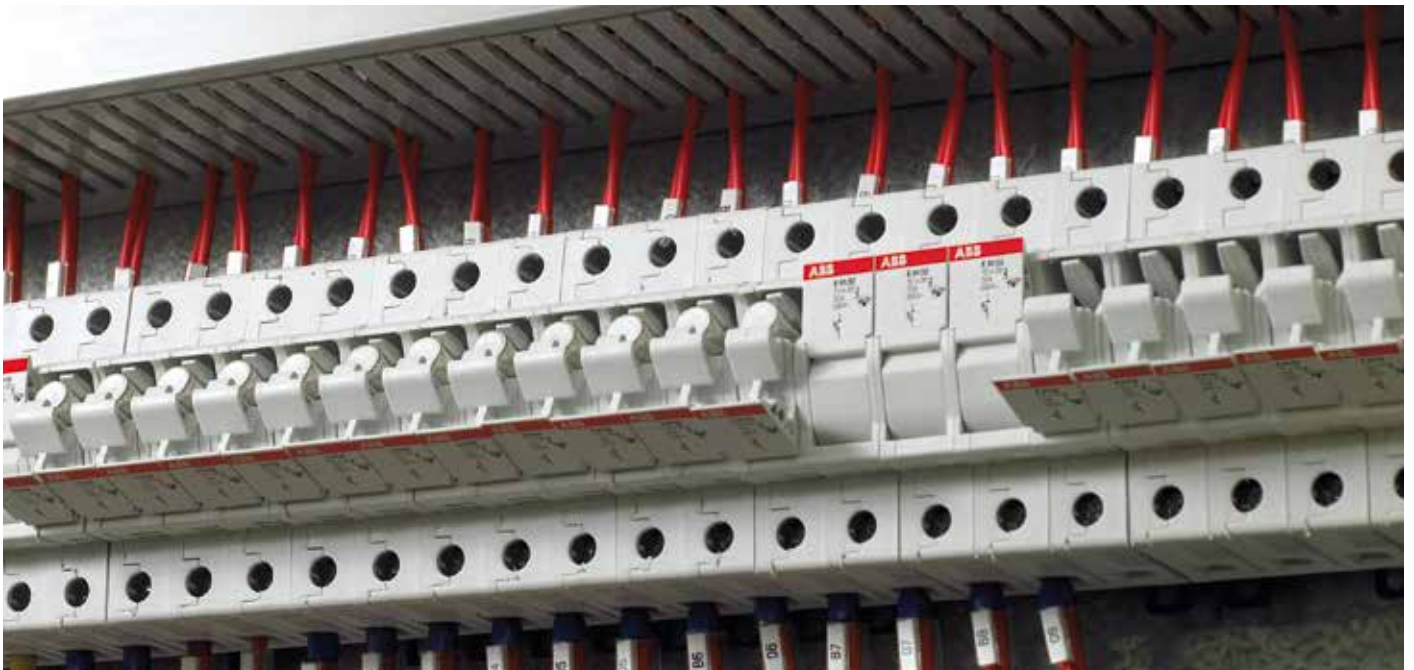
- Protection of terminal circuits
- Switching of loads, even inductive
- Selectivity



E 90 fuse disconnectors are designed for switching under load, ensuring isolation and protection against short circuit and overload, in compliance with the IEC 60947-3 Standard.

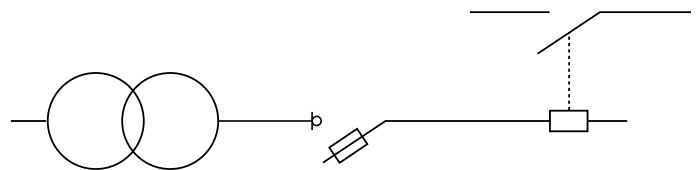
E 90 range is designed to comply with the strictest requirements of OEMs and panel builders. They are ideally installed in industrial automation switchboards to protect secondary circuits, primary and secondary of transformers, motors and other resistive or inductive loads. Due to the AC-22B utilization category up to 400 V, according to the IEC 60947-3 Standard, E 90 fuse disconnectors are convenient, simple and reliable devices for loads switching and protection.

Fuse disconnectors ensure selectivity, if equipped with appropriate fuses. Since they are uURus type-approved, they can be installed in UL-certified machines designed for the American market.



Application example

Here you can find a typical industrial control application. According to IEC 60364-1 Standard, the secondary winding of a control transformer must be protected against short circuits and overload. The transformer provides dedicated 230 V AC power supply to a battery of industrial contactors.



Industrial distribution E 90h fuseholders: ideal for distribution switchboards



E 90h fuseholders

Compact protection of electric auxiliaries in distribution switchboards

Applications

- Distribution switchboards
- Consumer units

Terminal protection of:

- Electric auxiliaries
- Switchboard instrumentation
- Surge arresters

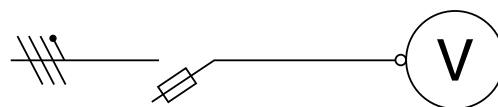
E 90 Fuseholders – 1P+N in one module and 3P+N in three modules, respectively – are very compact in size and are the most suitable solution for protection of circuits and devices inside switchboards.

E 90h range is designed for protecting electrical devices both in single phase and in three-phase networks with neutral. They are particularly suitable inside switchboards and consumer units for protecting lighting circuits, modular sockets and electrical devices for monitoring, measuring and signalling.



Application example

Here you can find a typical application inside a secondary distribution switchboard. Following the manufacturer's instruction, the voltmetric inputs of the multimeter are protected with fuses.



E 90 PV fuse disconnectors for photovoltaic applications Designed for industry professionals

Features

- For 10.3 x 38 mm fuses
- Rated voltage 1000 V DC
- Rated current 32 A
- DC-20B Utilization category
- Reference standards:
IEC 60947-3 UL 4248-18



E 90 PV fuse disconnectors have been specifically designed for photovoltaic applications. Thanks to their rated voltage up to 1000 V DC they are the ideal solution for protecting cells, inverters or surge arresters. In case of maintenance, they ensure isolation of circuits and strings up to 1000 V in direct current, in total safety.

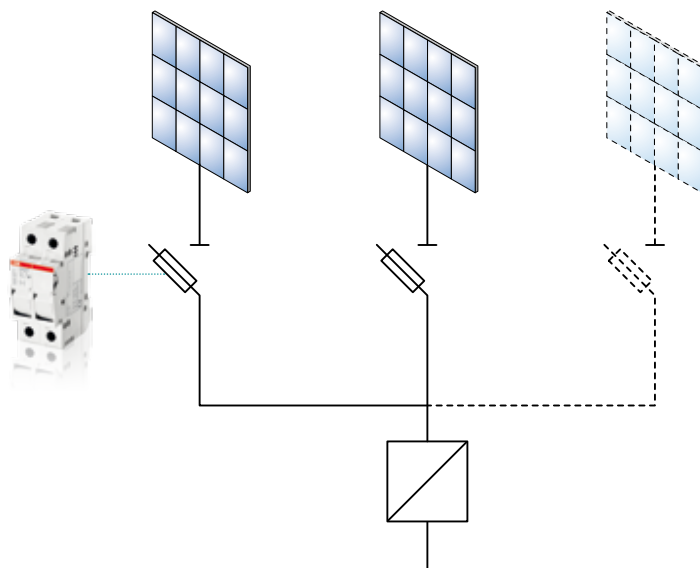


Isolation and protection of strings up to 1000 V

Application examples

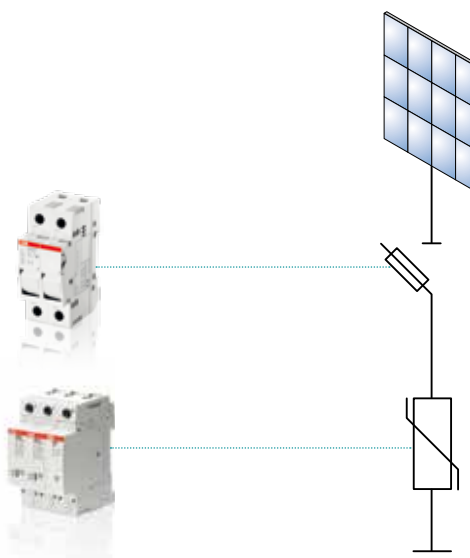
String protection

To prevent damage to the equipment in the direct current lines of photovoltaic installations and ensure that it remains **isolated** when maintenance work is performed, E 90 PV fuse disconnectors can be installed downstream of the inverter so as to protect each string. The fuses must be selected to suit the rated current of the line.



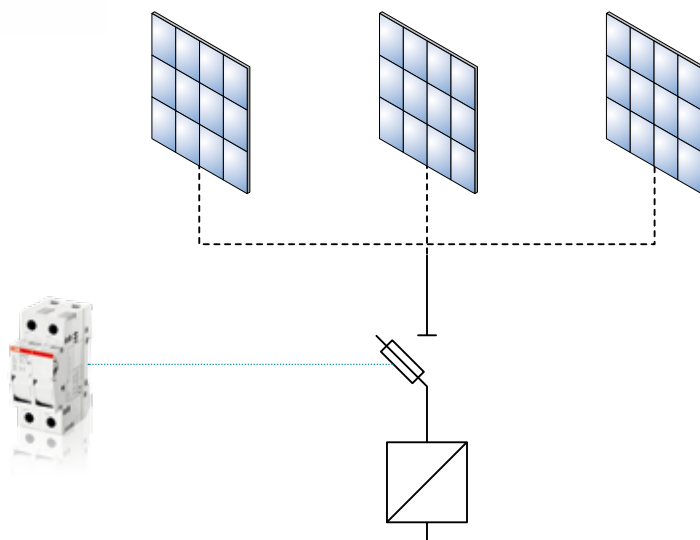
Surge arrester back-up

When the I_{cc} short-circuit current at the installation point exceeds 100 A DC, **OVR PV** surge arresters require back-up protection with a specific gR-type fuse.



DC side of the inverter

In small photovoltaic installations, E 90 PV fuse disconnectors can be used to protect the direct current side of the inverter. Fuse cartridges should be selected according to the inverter rated current.



E 90 50/125 fuse disconnectors Protection for industrial circuits



Perfect integration, guaranteed innovation

Features

- For 14x51
and 22x58 mm fuses
- Rated voltage
690V AC according to IEC
and 600V AC/DC
according to UL
- UR type-approved



E 90 50/125 fuse disconnectors are specifically designed for protecting industrial circuits thanks to aM and gG cylindrical fuses with 50 A and 125 A ratings and ensuring disconnection properties according to IEC 60947-3. (The usage of 125 A fuses within E 90/125 fuseholder is allowed only in case the fuse power dissipation is lower than the maximum acceptable power dissipation value of the fuseholder - for more detail refers to section "Question and answers").

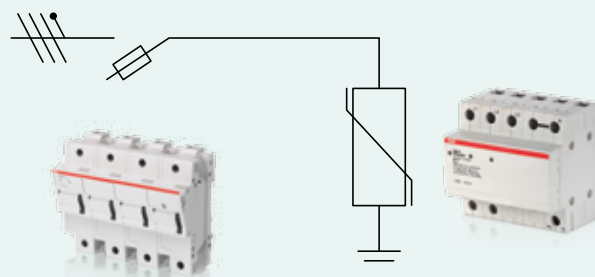
The E 90/50 and E 90/125 fuse disconnectors have been specifically designed to be used in all applications which require protection and isolation of high-current loads: thanks to their compatibility with gG and aM cylindrical fuses, they offer maximum flexibility in terms of protection of installation with rated currents up to 125 A.

The possibility to be padlocked in open position, ensures the safety of personnel who carry out maintenance operations. Furthermore the availability of optical blown fuse indicator in all versions of the new E 90 50/125 enables to easily and efficiently monitor distribution networks with high current ratings.



Application examples

OVR PV back-up protection, shown on the left, is a typical application for the fuseholder of the E 90 50/125 series. They can also be used as protection of motors and transformers, as protection against overloads and short circuits in low voltage installations where currents are up to 125 A and in control circuits.



Quality also speaks American
E 90 CC fuseholders,
designed for the North American market



E 90 CC fuseholders

Specifically developed for branch circuit protection

Features

- UL Listed according to UL 4248-1 and UL 4248-4
- Can be equipped only with Class CC fuses
- Rated voltage 600 V AC/DC
- Rated current 30 A
- Versions 1, 1N, 2, 3, 3N, 4 poles
- Rejection member to allow just the insertion of a class CC fuse



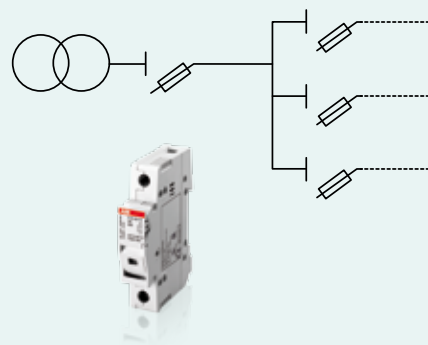
E 90 CC range has been designed to comply with North American market regulations and to enable worldwide manufacturers to sell their equipment in conformity with safety requirements also in these countries.

Class CC fuses have limiting characteristics dedicated to terminal protection of components and equipments against short-term overloads and dedicated to motors' protection against short-circuit. Maximum rated current of a Class CC fuse is 30 A, whereas the maximum rated voltage is 600 V. The breaking capacity reaches 200 kA. The limiting properties of the Class CC fuses are particularly appreciated in the North American market, allowing suitable protection even of equipment with limited resistance to short-circuit. The use of Class CC fuses is continuously increasing in the American market, since the safety and reliability prescriptions of end users have become stricter and do not tolerate any permanent damage to motor starts.



Application examples

E 90 CC fuseholders have been developed to host Class CC fuses only. They are used in the NAM markets mainly as branch circuit protection. Here on the right side, an application example is showed.



A new range for the North American market E 90 30/60 J fuseholders



E 90 J fuseholders

Specifically designed to be equipped with class J fuses

Features:

- UL listed according to 4248-8
- Can be equipped only with Class J fuses
- Rated voltage 600 V AC
- Rated current up to 60 A
- Versions with 1, 2 and 3 poles



E 90 J range has been designed to comply with North American market regulations. The E 90 J fuse carriers are the ideal solution for industrial installation, motors and transformers protection, heating systems and control circuits.

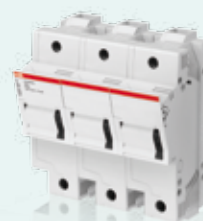
In accordance with the reference standard UL 4248-8, they come in voltage and current ratings up to 600V and 30/60A, respectively.

The breaking capacity reaches 200 kA. Fuseholders of the E 90 J series are available in multipole configuration, from 1 to 3 poles. Versions with blown fuse indicator light provide a visual signal of the fuse break condition allowing a faster and safer maintenance of the installation. They can be padlocked open and sealed closed to ensure operator safety during maintenance operations.



Application examples

On the left side, is showed a typical example of motors protection, E 90 J fuseholders are mainly used in the North American market as motors, alternators and transformers protection or as feeding, heating and light circuits protection.



Technical data

E 90 series

Data according to IEC

Type		E 90/20	E 90/32		
Rated current	[A]	20	32		
Type of current		AC	AC		
Fuse	[mm]	8,5 x 31,5	10,3 x 38		
Max power dissipation accepted	[W]	2,5	3		
Rated frequency	[Hz]	50-60	50-60		
Tightening torque	[Nm]	PZ 2-2,5	PZ 2-2,5		
Protection degree		IP20	IP20		
Terminals section	[mm ²]	25	25		
Cross section rigid copper conductors	[mm ²]	1,5 - 25	1,5 - 25		
Cross section stranded copper conductors	[mm ²]	1,5 - 26	1,5 - 26		
Padlockable (when open)		•	•		
Sealable (when closed)		•	•		
IEC 60947-3					
Utilization category		AC-22B	AC-20B	AC-22B	AC-20B
Rated voltage	[V]	400	690	400	690
IEC 60269-3					
Rated voltage	[V]	-			

Marks and approvals	E 90/20	E 90/32
IMQ	•*(1)	•*(1)
NF	•**(1)	•**(1)
CCC - Cina	•*(1)	•*(1)
RINA	•*(1)	•*(1)
LLOYD	•*(1)	•*(1)
BV	•(1)	•(1)
EAC	•	•
GOST - Ukraina		•

•* = without LED version

•** = no neutral and without LED version

•*** = dedicated range with neutral on the left side

**** = IP20 also as standalone device installed on DIN rail, with respect to cables with a cross-section area $\geq 10 \text{ mm}^2$

(1) = certified AC-22B at 400 V in compliance with IEC 60947-3

(2) = according to IEC 60296-2

(2b) = with aM-type fuses and in combination with a device that ensures overload protection

E 90hN/20	E 90hN/32	E 90/32 PV	E 90/50	E 90/125
20	32	32	50	100 ⁽²⁾ / 125 ^(2b)
AC	AC	DC	AC	AC
8.5 x 31.5	10.3 x 38	10.3 x 38	14 x 51	22 x 58
2.6	3.2	3	5	9.5
50-60	50-60	–	50-60	
PZ2 0.8-1.2	PZ2 0.8-1.2	PZ2 2-2.5	PZ2 3-3.5	PZ2 3.5-4
IP20	IP20	IP20	IP20 ****	
16	16	25	35	50
1.5 - 16	1.5 - 16	1.5 - 25	2.5 - 35	4 - 50
1.5 - 10	1.5 - 10	1.5 - 16	2.5 - 25	4 - 35
•	•	•	•	
•	•	•	•	
–	–	DC-20B	AC-20B	AC-20B
–	–	1000	690	690
400	400	–	–	–

E 90hN/20	E 90hN/32	E 90/32 PV	E 90/50	E 90/125
•*	•*		•	•
•***	•***			
•*	•*	•	•	•
•*	•*		•	•
•*	•*		•	•
•	•	•	•	•
•	•	•	•	•
•	•	•		

Technical data

E 90 series

Data according to UL

Type		E 90/32	E 90/32 PV	E 90/50
Rated current	[A]	32	32	50
Rated Voltage	[V]	600	1000	600
Type of current		AC/DC	DC	AC/DC
Fuse		10.3 x 38	10.3 x 38	14 x 51
Rated frequency	[Hz]	50-60	-	50-60
Tightening torque	[Nm]	PZ2 2-2.5	PZ2 2-2.5	PZ2 3-3.5
Protection degree		IP20	IP20	IP20 *****
Terminals section	[mm ²]	25	25	35
Cross section rigid copper conductors	[AWG]	16÷10	Not foreseen	14÷10
Cross section stranded copper conductors	[AWG]	16÷3	8÷3	14÷2
Padlockable (when open)		•	•	•
Sealable (when closed)		•	•	•

Marks and Approvals

cULus			
UL		•(2)	
cURus	•(1)		•(1)
CSA			

(1) = certified at 600 V in compliance with UL 4248-1

(2) = certified at 1000 V in compliance with UL 4248-18

(3) = certified at 600 V in compliance with UL 4248-8

(4) = certified at 600 V in compliance with UL 4248-4

***** IP20 also as standalone device installed on DIN rail, with respect to cables with a cross-section area $\geq 10 \text{ mm}^2$

E 90/125	E 90/30 CC	E 90/30 J	E 90/60 J
125	30	30	60
600	600	600	600
AC/DC	AC/DC	AC/DC	AC/DC
22 x 58	Class CC 10.4 x 38	Class J 21 x 57	Class J 27 x 60
50-60	60	60	60
PZ2 3.5-4	PZ2 2-2.5	PZ2 3.5-4	PZ2 3.5-4
IP20 ****	IP20	n.a.	n.a.
50	25	50	50
14±10	16±10	14±10	14±10
14±1	16±3	14±1	14±1
•	•	•	•
•	•	•	•
	•(4)	•(3)	•(3)
•(1)			
	•	•	•

Shock and vibration

Vibration withstand on the 3 main axis:

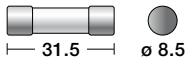
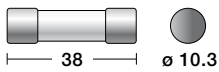
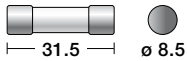
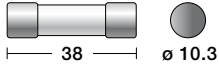
- Sinusoidal vibration testing according to IEC 60068-2-6
2 to 13 Hz x= 1 mm peak
13 to 100 Hz y= 0.7 g peak
- Random vibration testing according to IEC 61373
Category 1 Class B

Shock withstand on the 3 main axis:

- Shock testing according to IEC 60068-2-27 15g/11ms/18 shocks
- Shock testing according to IEC 61373 Category 1 Class B

Order codes

E 90 series



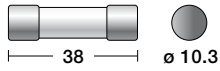
Poles	Rated current In [A]	Modules	Bbn 8012542 EAN	Description		Piece weight [kg]	Pack unit pcs
				Type	ABB code		
E 90 fuse disconnectors for 10.3 x 38 mm fuses							
1	32	1	009238	E 91/32	2CSM200923R1801	0.061	6
1	32	1	024835	E 91/32s*	2CSM202483R1801	0.062	6
1+N	32	2	008934	E 91N/32	2CSM200893R1801	0.130	3
1+N	32	2	515036	E 91N/32s*	2CSM251503R1801	0.131	3
2	32	2	008835	E 92/32	2CSM200883R1801	0.122	3
2	32	2	514930	E 92/32s*	2CSM251493R1801	0.123	3
3	32	3	047537	E 93/32	2CSM204753R1801	0.183	2
3	32	3	020639	E 93/32s*	2CSM202063R1801	0.184	2
3+N	32	4	047339	E 93N/32	2CSM204733R1801	0.252	1
3+N	32	4	514831	E 93N/32s*	2CSM251483R1801	0.254	1
4	32	4	047230	E 94/32	2CSM204723R1801	0.244	1
4	32	4	020530	E 94/32s*	2CSM202053R1801	0.245	1

Poles	Rated current In [A]	Modules	Bbn 8012542 EAN	Description		Piece weight [kg]	Pack unit pcs
				Type	ABB code		
E 90 fuse disconnectors for 8.5 x 31.5 mm fuses							
1	20	1	009832	E 91/20	2CSM200983R1801	0.061	6
1	20	1	024231	E 91/20s*	2CSM202423R1801	0.062	6
2	20	2	009535	E 92/20	2CSM200953R1801	0.122	3
2	20	2	896234	E 92/20s*	2CSM289623R1801	0.123	3
3	20	3	009436	E 93/20	2CSM200943R1801	0.183	2
3	20	3	896135	E 93/20s*	2CSM289613R1801	0.184	2

*s: version with blown fuse indicator

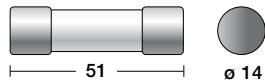
Poles	Rated current In [A]	Modules	Bbn 8012542 EAN	Description		Piece weight [kg]	Pack unit pcs
				Type	ABB code		
E 90h fuseholders for 10.3 x 38 mm fuses							
1+N	32	1	009139	E 91hN/32	2CSM200913R1801	0.070	6
1+N	32	1	065739	E 91hN/32s*	2CSM206573R1801	0.071	6
3+N	32	3	047438	E 93hN/32	2CSM204743R1801	0.192	2
3+N	32	3	743439	E 93hN/32s*	2CSM274343R1801	0.193	2
E 90h fuseholders for 8.5 x 31.5 mm fuses							
1+N	20	1	009634	E 91hN/20	2CSM200963R1801	0.070	6
1+N	20	1	007036	E 91hN/20s*	2CSM200703R1801	0.071	6
3+N	20	3	009337	E 93hN/20	2CSM200933R1801	0.192	2
3+N	20	3	896036	E 93hN/20s*	2CSM289603R1801	0.193	2

*s: version with blown fuse indicator

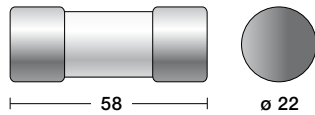


Poles	Rated current In [A]	Modules	Bbn 8012542 EAN	Description		Piece weight [kg]	Pack unit pcs
				Type	ABB code		
E 90 PV fuse disconnecters for 10.3 x 38 mm fuses (DC-20B)							
1	32	1	047131	E 91/32 PV	2CSM204713R1801	0.061	6
1	32	1	046936	E 91/32 PVs*	2CSM204693R1801	0.062	6
2	32	2	047032	E 92/32 PV	2CSM204703R1801	0.122	3
2	32	2	569138	E 92/32 PVs*	2CSM256913R1801	0.123	3

*s: version with blown fuse indicator



Poles	Rated current In [A]	Modules	Bbn 8012542 EAN	Description		Piece weight [kg]	Pack unit pcs
				Type	ABB code		
E 90/50 fuseholders for 14 x 51 mm fuses (AC-20B)							
1	50	1.5	790228	E 91/50	2CSM279022R1801	0.095	4
1	50	1.5	372028	E 91/50s*	2CSM237202R1801	0.095	4
1+N	50	3	779827	E 91N/50	2CSM277982R1801	0.19	2
1+N	50	3	023920	E 91N/50s*	2CSM202392R1801	0.19	2
2	50	3	779728	E 92/50	2CSM277972R1801	0.19	2
2	50	3	070320	E 92/50s*	2CSM207032R1801	0.19	2
3	50	4.5	779629	E 93/50	2CSM277962R1801	0.285	1
3	50	4.5	574828	E 93/50s*	2CSM257482R1801	0.285	1
3+N	50	6	779520	E 93N/50	2CSM277952R1801	0.38	1
3+N	50	6	563020	E 93N/50s*	2CSM256302R1801	0.38	1

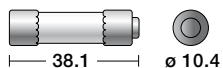


Poles	Rated current In [A]	Modules	Bbn 8012542 EAN	Description		Piece weight [kg]	Pack unit pcs
				Type	ABB code		
E 90/125 fuseholders for 22 x 58 mm fuses (AC-20B)							
1	100	2	775720	E 91/125	2CSM277572R1801	0.135	4
1	100	2	896326	E 91/125s*	2CSM289632R1801	0.135	4
1+N	100	4	773528	E 91N/125	2CSM277352R1801	0.27	2
1+N	100	4	049425	E 91N/125s*	2CSM204942R1801	0.27	2
2	100	4	771326	E 92/125	2CSM277132R1801	0.27	2
2	100	4	049326	E 92/125s*	2CSM204932R1801	0.27	2
3	100	6	775027	E 93/125	2CSM277502R1801	0.405	1
3	100	6	049227	E 93/125s*	2CSM204922R1801	0.405	1
3+N	100	8	965329	E 93N/125	2CSM296532R1801	0.54	1
3+N	100	8	049128	E 93N/125s*	2CSM204912R1801	0.54	1

*s: version with blown fuse indicator

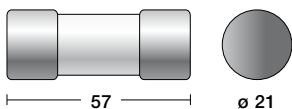
Order codes

E 90 series

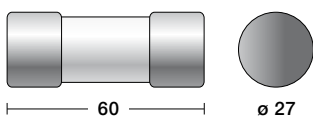


Poles	Rated current In [A]	Modules	Bbn 8012542 EAN	Description		Piece weight [kg]	Pack unit pcs
				Type	ABB code		
E 90 CC fuseholders for Class CC 10.4 x 38.1 mm fuses							
1	30	1	998723	E 91/30	2CSM299872R1801	0.061	6
1	30	1	998822	E 91/30s*	2CSM299882R1801	0.062	6
1+N	30	2	998921	E 91N/30	2CSM299892R1801	0.13	3
1+N	30	2	999027	E 91N/30s*	2CSM299902R1801	0.131	3
2	30	2	999126	E 92/30	2CSM299912R1801	0.122	3
2	30	2	999225	E 92/30s*	2CSM299922R1801	0.123	3
3	30	3	999324	E 93/30	2CSM299932R1801	0.183	2
3	30	3	999423	E 93/30s*	2CSM299942R1801	0.184	2
3+N	30	4	999522	E 93N/30	2CSM299952R1801	0.252	1
3+N	30	3	999621	E 93N/30s*	2CSM299962R1801	0.253	1
4	30	4	999720	E 94/30	2CSM299972R1801	0.244	1
4	30	4	999829	E 94/30s*	2CSM299982R1801	0.245	1

*s: version with blown fuse indicator



Poles	Rated current In [A]	Modules	Bbn 8012542 EAN	Description		Piece weight [kg]	Pack unit pcs
				Type	ABB code		
E 90 J fuseholders for Class J 21 x 57 mm fuses							
1	30	2	048220	E 91/30 J	2CSM204822R1801	0.135	4
2	30	4	048121	E 92/30 J	2CSM204812R1801	0.27	2
3	30	6	048022	E 93/30 J	2CSM204802R1801	0.405	1
1	30	2	047926	E 91/30s J *	2CSM204792R1801	0.135	4
2	30	4	047827	E 92/30s J *	2CSM204782R1801	0.27	2
3	30	6	047728	E 93/30s J *	2CSM204772R1801	0.405	1

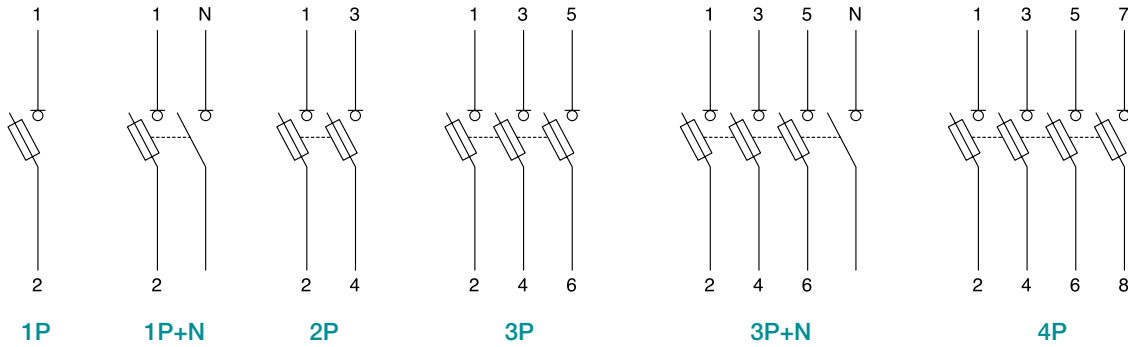


E 90 J fuseholders for Class J 27 x 60 mm fuses							
1	60	2.5	047629	E 91/60 J	2CSM204762R1801	0.175	3
2	60	5	049821	E 92/60 J	2CSM204982R1801	0.35	1
3	60	7.5	049722	E 93/60 J	2CSM204972R1801	0.525	1
1	60	2.5	049623	E 91/60s J *	2CSM204962R1801	0.175	3
2	60	5	049524	E 92/60s J *	2CSM204952R1801	0.35	1
3	60	7.5	738824	E 93/60s J *	2CSM273882R1801	0.525	1

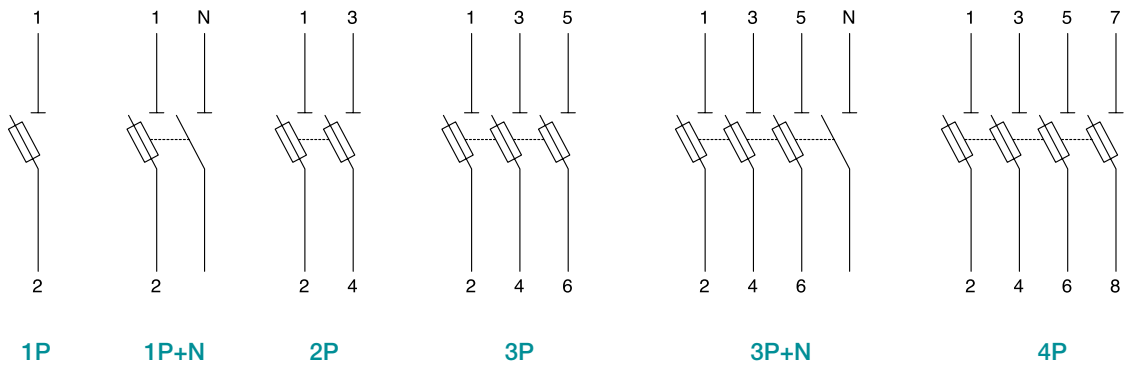
*s: version with blown fuse indicator

Wiring diagrams and overall dimensions E 90 series

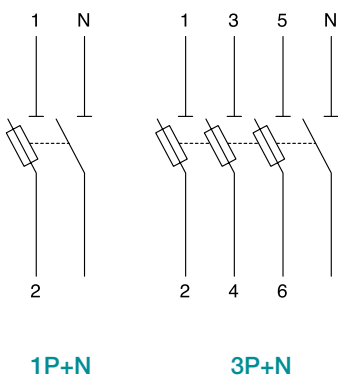
E 90 wiring diagrams



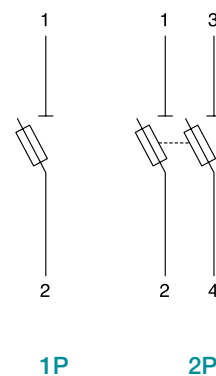
E 90 CC wiring diagrams



E 90 h wiring diagrams

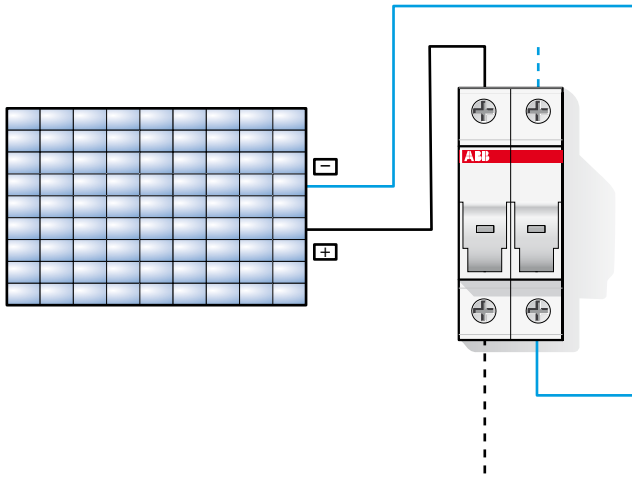


E 90 PV wiring diagrams

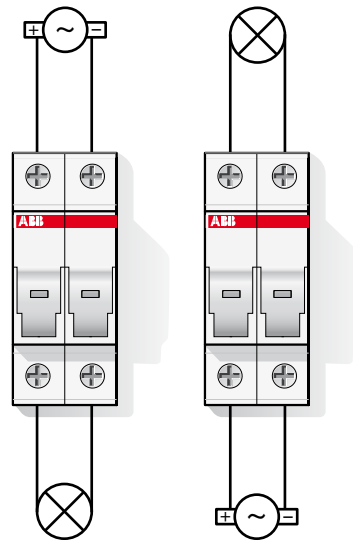


Wiring diagrams and overall dimensions E 90 series

Wiring connection E 90



Wiring diagram for DC networks



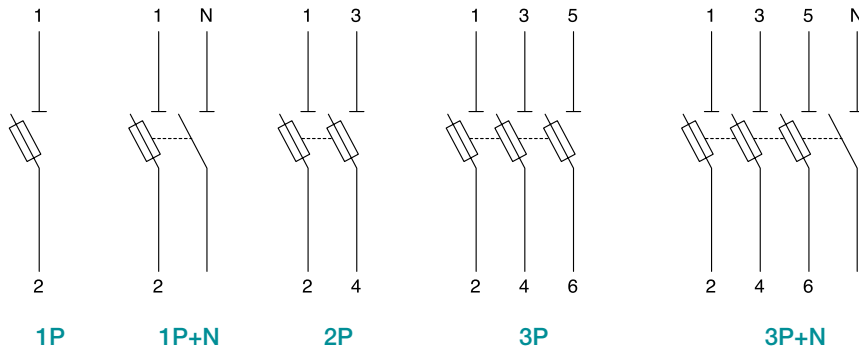
Wiring diagram for AC networks

Overall dimensions



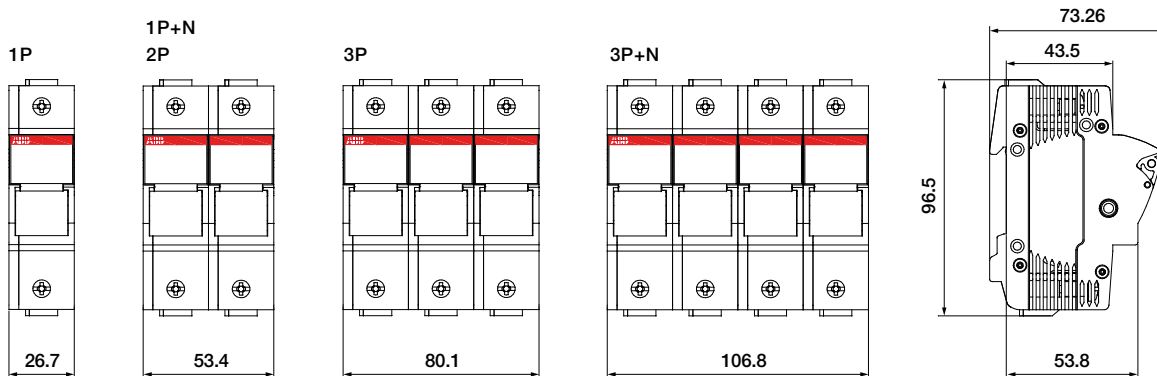
Wiring diagrams and overall dimensions E 90 50/125 series

Wiring diagrams

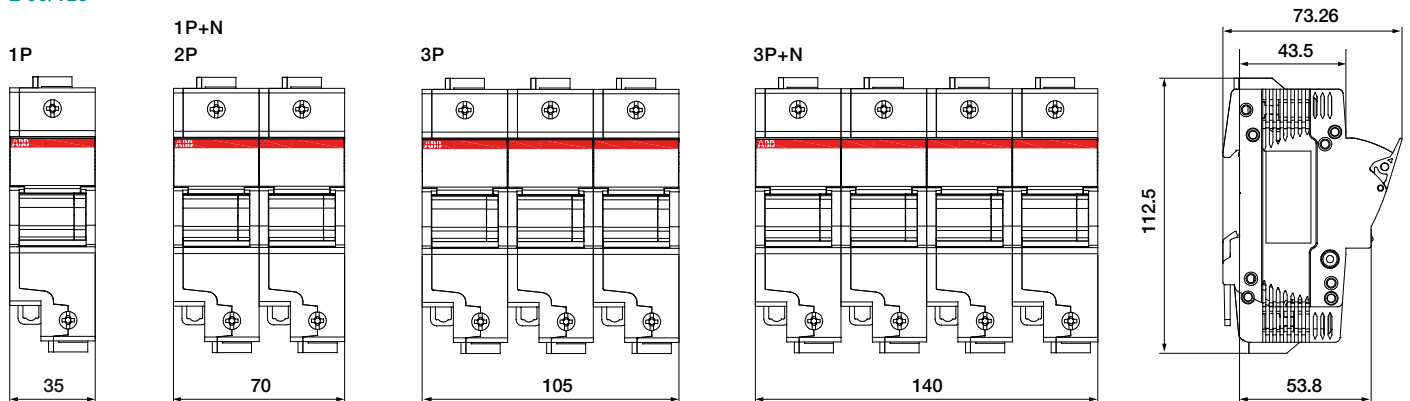


Overall dimensions

E 90/50

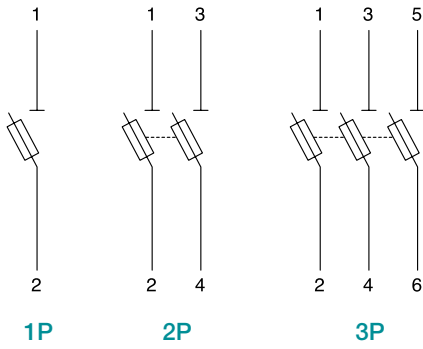


E 90/125



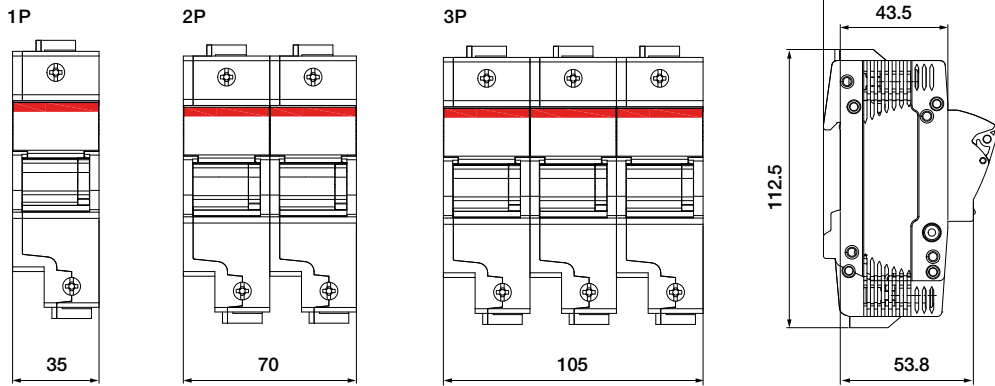
Wiring diagrams and overall dimensions E 90 30/60 J series

Wiring diagrams

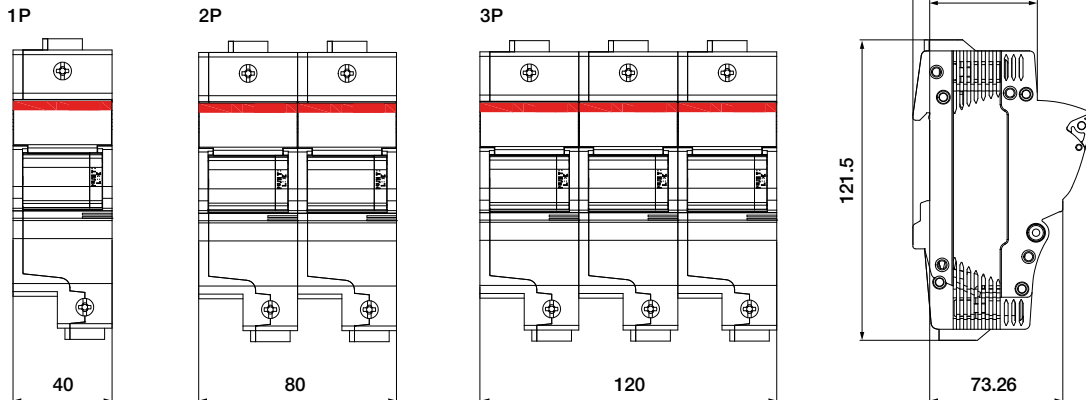


Overall dimensions

E 90/30 J

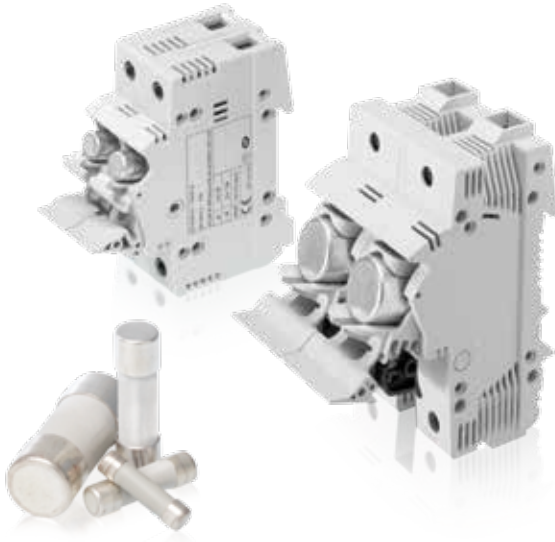


E 90/60 J



How to choose the protection system

Maximum rated current value of the fuse



The maximum rated current values of the fuse that can be installed in the fuseholder are given in the table below. These values depend on the rated voltage of the network and conform to the maximum limits of the power dissipated by the protection system, formed by the fuse and fuseholder. ABB fuses and fuseholders allow all the requirements established by the standards to be met in full safety. The performance provided by ABB products allows a fuse with a rated current that exceeds the limit dictated by standard IEC 60269-2-1 to be installed in certain situations.

Rated voltage	Fuse curve	Fuseholders			
		E 90/20 8.5 x 31.5 mm	E 90/32 10.3 x 38 mm	E 90/50 14 x 51 mm	E 90/125 22 x 58 mm
400 V AC	gG	20 A	32 A		
	aM	10 A	32 A		
500 V AC	gG	-	25 A	50 A	100 A
	aM	-	20 A	50 A	125 A*
690 V AC	gG	-	-	25 A	80 A
	aM	-	-	25 A	80 A

* = to be used in combination with a device which guarantees protection against overload.

Derating values for E 90 fuseholders

The derating parameters in the table must be considered if several poles are installed side by side or if the equipment is installed in unusual climatic conditions.

Installation of single poles side by side					
E 90/32		E 91hN/32		E 90 50/125	
Poles	Maximum current	Poles	Maximum current	Poles	Maximum current
1...4	I_n	1...3	I_n	1...3	I_n
5...7	$0.8 \times I_n$	4...9	$0.7 \times I_n$	4...6	$0.95 \times I_n$
More than 7	$0.7 \times I_n$	More than 10	$0.6 \times I_n$	More than 7	$0.9 \times I_n$

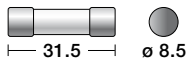
Climatic conditions			
E 90/32		E 90 50/125	
Maximum temperature	Maximum current	Maximum temperature	Maximum current
20° C	I_n	20° C	I_n
30° C	95%	30° C	95%
40° C	90%	40° C	90%
50° C	80%	50° C	85%

E 9F gG cylindrical fuses

The fastest protection for industrial automation switchboards

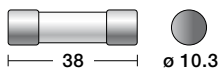
E 9F gG series fuses are the best way to protect against overloads and short-circuits together with series fuse E 90. They feature a fast tripping curve that is ideal for protecting electronic devices, transformers and electric cables. The E 9F gG series is available for all the main sizes (8.5 x 31.5 mm, 10.3 x 38 mm, 14 x 51 mm e 22 x 58 mm) and with a wide range of rated current values (from 1 A to 125 A and up to 690 V AC).

All the E 9F series fuses conform to the RoHS directive and are type-approved in accordance with the most important international naval marks.



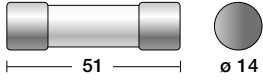
E 9F 8 gG 8.5 x 31.5 mm cylindrical fuses

Rated current In [A]	Bbn 8012542 EAN	Description		Piece weight [kg]	Package
		Type	ABB code		
1	575733	E 9F8 GG1	2CSM257573R1801	0.004	10
2	563938	E 9F8 GG2	2CSM256393R1801	0.004	10
4	586630	E 9F8 GG4	2CSM258663R1801	0.004	10
6	574835	E 9F8 GG6	2CSM257483R1801	0.004	10
8	563037	E 9F8 GG8	2CSM256303R1801	0.004	10
10	775737	E 9F8 GG10	2CSM277573R1801	0.004	10
12	773535	E 9F8 GG12	2CSM277353R1801	0.004	10
16	771333	E 9F8 GG16	2CSM277133R1801	0.004	10
20	775034	E 9F8 GG20	2CSM277503R1801	0.004	10



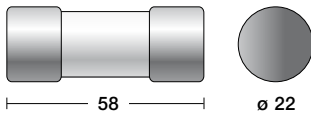
E 9F 10 gG 10.3 x 38 mm cylindrical fuses

Rated current In [A]	Bbn 8012542 EAN	Description		Piece weight [kg]	Package
		Type	ABB code		
0.5	773337	E 9F10 GG05	2CSM277333R1801	0.007	10
1	771135	E 9F10 GG1	2CSM277113R1801	0.007	10
2	587231	E 9F10 GG2	2CSM258723R1801	0.007	10
4	575436	E 9F10 GG4	2CSM257543R1801	0.007	10
6	563631	E 9F10 GG6	2CSM256363R1801	0.007	10
8	586333	E 9F10 GG8	2CSM258633R1801	0.007	10
10	574538	E 9F10 GG10	2CSM257453R1801	0.007	10
12	562733	E 9F10 GG12	2CSM256273R1801	0.007	10
16	775430	E 9F10 GG16	2CSM277543R1801	0.007	10
20	773238	E 9F10 GG20	2CSM277323R1801	0.007	10
25	771036	E 9F10 GG25	2CSM277103R1801	0.007	10
32	587132	E 9F10 GG32	2CSM258713R1801	0.007	10



E 9F 14 gG 14 x 51 mm cylindrical fuses

Rated current In [A]	Bbn 8012542 EAN	Description		Piece weight [kg]	Package
		Type	ABB code		
2	775232	E 9F14 GG2	2CSM277523R1801	0.018	10
4	773030	E 9F14 GG4	2CSM277303R1801	0.018	10
6	770831	E 9F14 GG6	2CSM277083R1801	0.018	10
8	910039	E 9F14 GG8	2CSM291003R1801	0.018	10
10	909835	E 9F14 GG10	2CSM290983R1801	0.018	10
12	909637	E 9F14 GG12	2CSM290963R1801	0.018	10
16	587835	E 9F14 GG16	2CSM258783R1801	0.018	10
20	576037	E 9F14 GG20	2CSM257603R1801	0.018	10
25	564232	E 9F14 GG25	2CSM256423R1801	0.018	10
32	586937	E 9F14 GG32	2CSM258693R1801	0.018	10
40	575139	E 9F14 GG40	2CSM257513R1801	0.018	10
50	563334	E 9F14 GG50	2CSM256333R1801	0.018	10



E 9F 22 gG 22 x 58 mm cylindrical fuses

Rated current In [A]	Bbn 8012542 EAN	Description		Piece weight [kg]	Package
		Type	ABB code		
4	571834	E 9F22 GG4	2CSM257183R1801	0.048	10
6	592839	E 9F22 GG6	2CSM259283R1801	0.048	10
8	581031	E 9F22 GG8	2CSM258103R1801	0.048	10
10	569237	E 9F22 GG10	2CSM256923R1801	0.048	10
12	594031	E 9F22 GG12	2CSM259403R1801	0.048	10
16	582236	E 9F22 GG16	2CSM258223R1801	0.048	10
20	570431	E 9F22 GG20	2CSM257043R1801	0.048	10
25	595335	E 9F22 GG25	2CSM259533R1801	0.048	10
32	583530	E 9F22 GG32	2CSM258353R1801	0.048	10
40	571735	E 9F22 GG40	2CSM257173R1801	0.048	10
50	593935	E 9F22 GG50	2CSM259393R1801	0.048	10
63	582137	E 9F22 GG63	2CSM258213R1801	0.048	10
80	570332	E 9F22 GG80	2CSM257033R1801	0.048	10
100	595236	E 9F22 GG100	2CSM259523R1801	0.048	10
125	583431	E 9F22 GG125	2CSM258343R1801	0.048	10

Technical specifications

Rated voltage	[V]	400, 500, 690 AC
Rated current	[A]	0.5...125
Breaking capacity	[kA]	20, 120
Overall dimensions	[mm]	8.5 x 31.5, 10.3 x 38, 14 x 51, 22 x 58
Weight	[g]	4, 7, 18, 48
Marks		LLOYD, BV
Standards		IEC 60269-2; ROHS 2002/98/CE

E 9F gG cylindrical fuses

The fastest protection for industrial automation switchboards

E 9F 8 gG 8.5 x 31.5 mm cylindrical fuses

Type	Rated current [A]	Rated voltage [V AC]	Breaking capacity [kA]
E 9F8 GG1	1	400	20
E 9F8 GG2	2	400	20
E 9F8 GG4	4	400	20
E 9F8 GG6	6	400	20
E 9F8 GG8	8	400	20
E 9F8 GG10	10	400	20
E 9F8 GG12	12	400	20
E 9F8 GG16	16	400	20
E 9F8 GG20	20	400	20

E 9F 10 gG 10.3 x 38 mm cylindrical fuses

Type	Rated current [A]	Rated voltage [V AC]	Breaking capacity [kA]
E 9F10 GG05	0.5	500	120
E 9F10 GG1	1	500	120
E 9F10 GG2	2	500	120
E 9F10 GG4	4	500	120
E 9F10 GG6	6	500	120
E 9F10 GG8	8	500	120
E 9F10 GG10	10	500	120
E 9F10 GG12	12	500	120
E 9F10 GG16	16	500	120
E 9F10 GG20	20	500	120
E 9F10 GG25	25	500	120
E 9F10 GG32	32	400	120

E 9F 14 gG 14 x 51 mm cylindrical fuses

Type	Rated current [A]	Rated voltage [V AC]	Breaking capacity [kA]
E 9F14 GG2	2	690	120
E 9F14 GG4	4	690	120
E 9F14 GG6	6	690	120
E 9F14 GG8	8	690	120
E 9F14 GG10	10	690	120
E 9F14 GG12	12	690	120
E 9F14 GG16	16	690	120
E 9F14 GG20	20	690	120
E 9F14 GG25	25	690	120
E 9F14 GG32	32	500	120
E 9F14 GG40	40	500	120
E 9F14 GG50	50	500	120

E 9F 22 gG 22 x 58 mm cylindrical fuses

Type	Rated current [A]	Rated voltage [V AC]	Breaking capacity [kA]
E 9F22 GG4	4	690	120
E 9F22 GG6	6	690	120
E 9F22 GG8	8	690	120
E 9F22 GG10	10	690	120
E 9F22 GG12	12	690	120
E 9F22 GG16	16	690	120
E 9F22 GG20	20	690	120
E 9F22 GG25	25	690	120
E 9F22 GG32	32	690	120
E 9F22 GG40	40	690	120
E 9F22 GG50	50	690	120
E 9F22 GG63	63	690	120
E 9F22 GG80	80	690	120
E 9F22 GG100	100	500	120
E 9F22 GG125	125	500	120

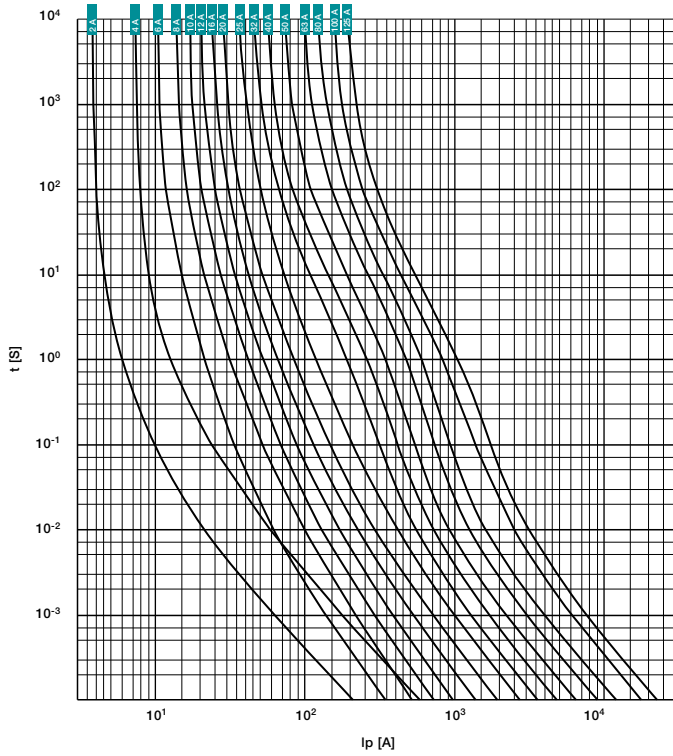
Power dissipation [W]				
In [A]	Size [mm]			
	8.5 x 31.5	10.3 x 38	14 x 51	22 x 58
0.5	0.55			
1	0.35	0.07	0.60	
2	0.45	0.45	0.75	
4	0.06	0.50	1.10	1.25
6	0.83	0.85	1.25	1.40
8	1	0.95	1.45	1.60
10	1.20	1.30	1.65	1.90
12	1.30	1.40	1.80	2
16	1.70	1.90	2.35	2.50
20	2	2.40	2.75	3.40
25	2.40	2.70	3.10	3.50
32		2.80	3.60	3.70
40			4	4.30
50			4.80	5.30
63				6.30
80				7.40
100				8.3
125				11.3

It is important to make sure that the power dissipated by the fuse does not exceed the limit imposed by the fuseholder in which it is installed. The maximum power dissipation values, in accordance with the specifications of the E 90 fuseholders series and IEC 60269-2 standard, are highlighted in green.

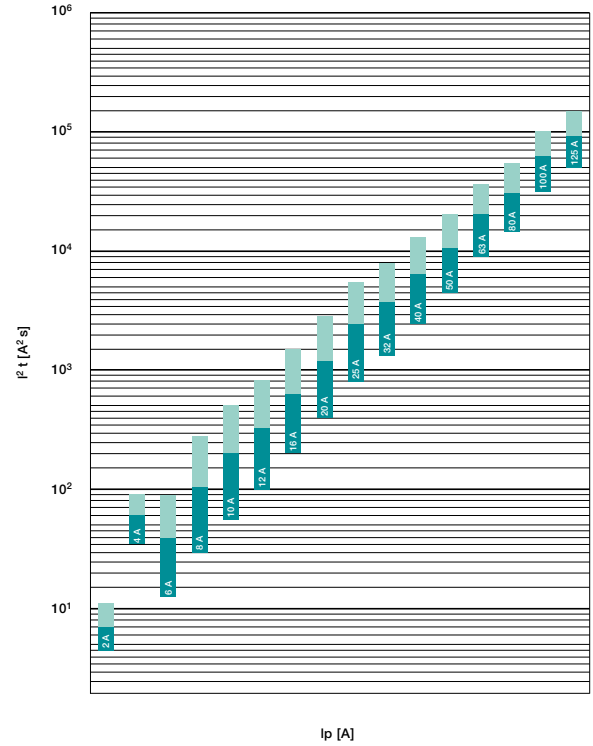
E 9F gG cylindrical fuses

The fastest protection for industrial automation switchboards

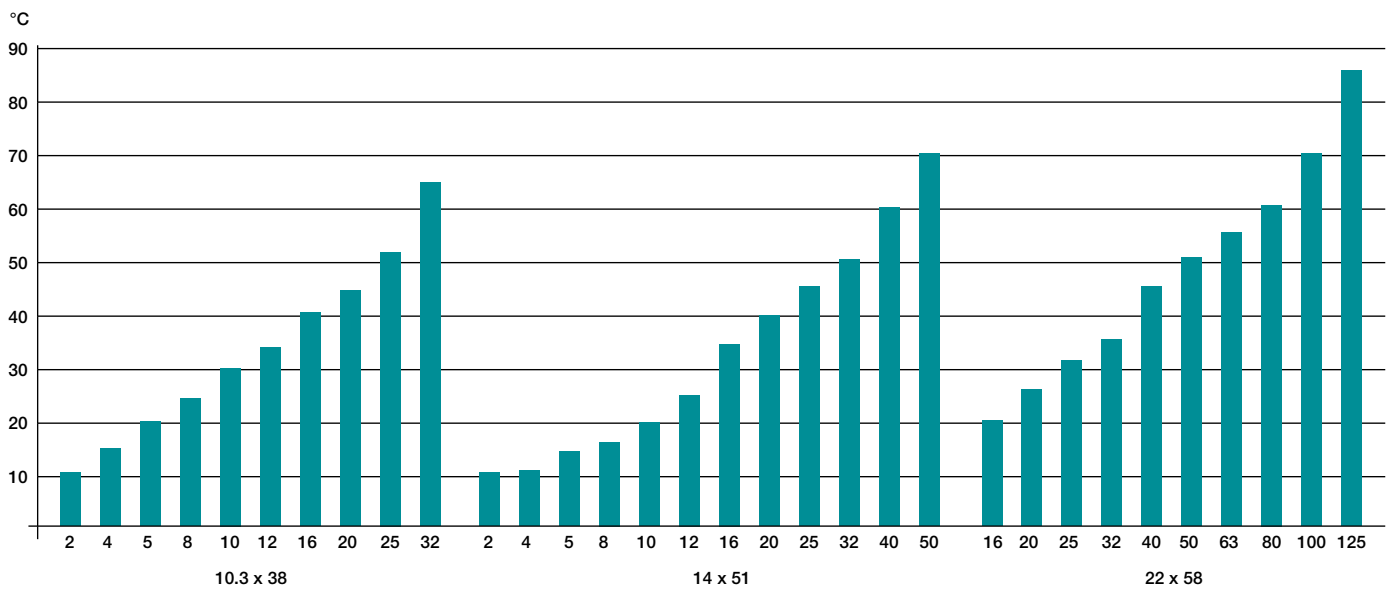
Characteristic tI



Characteristic I^2t



Temperature increase



Maximum length [m] of the copper conductors										
Copper conductor section [mm ²]	Rated current I _n [A] of gG fuses									
	16	20	25	32	40	50	63	80	100	125
1.5	99/113	86/87	40/59	21/29	13/16	7/9				
2.5		134	110/122	67/84	41/51	25/33	13/20	8/11		
4			183	139	108/119	67/84	46/58	24/32	14/17	7.3/10
6				214	165	139	94/113	55/70	33/41	20/27
10					275	226	172	130	90/108	57/70
16							283	217	168	128
25								336	257	197
35									367	283
50										379

Use this table to find the cable length, in meters, that is protected by a fuse.

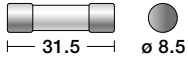
Just cross the rated current of the fuse (in the columns) with the section of the conductor (on the lines). The resulting number corresponds to the protected length of the conductor: for example, a 32 A fuse can protect up to 214 meters of 6 mm² section cable. When there are two values, it means that the maximum length of the cable is between the two numbers given in the table.

E 9F aM cylindrical fuses

Delayed protection for motor starts

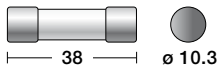
E 9F aM series fuses are the best way to protect against overloads and short-circuits together with series fuse E 90. They feature a delayed tripping curve and are therefore ideal for protecting industrial motors that require high inrush current during the starting phase.

The E 9F aM series is available for all the main sizes (8.5 x 31.5 mm, 10.3 x 38 mm, 14 x 51 mm e 22 x 58 mm) and with a wide range of rated current values (from 1 A to 125 A and up to 690 V AC). All the E 9F series fuses conform to the RoHS directive and are type-approved in accordance with the most important international naval marks.



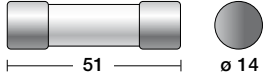
E 9F 8 aM 8.5 x 31.5 mm cylindrical fuses

Rated current In [A]	Bbn	Description		Piece weight [kg]	Package
	8012542 EAN	Type	ABB code		
1	772835	E 9F8 AM1	2CSM277283R1801	0.004	10
2	770633	E 9F8 AM2	2CSM277063R1801	0.004	10
4	587439	E 9F8 AM4	2CSM258743R1801	0.004	10
6	575634	E 9F8 AM6	2CSM257563R1801	0.004	10
8	563839	E 9F8 AM8	2CSM256383R1801	0.004	10
10	586531	E 9F8 AM10	2CSM258653R1801	0.004	10



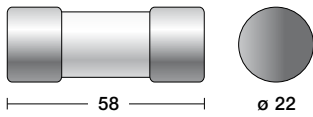
E 9F 10 aM 10.3 x 38 mm cylindrical fuses

Rated current In [A]	Bbn	Description		Piece weight [kg]	Package
	8012542 EAN	Type	ABB code		
0.5	574736	E 9F10 AM05	2CSM257473R1801	0.007	10
1	562931	E 9F10 AM1	2CSM256293R1801	0.007	10
2	775638	E 9F10 AM2	2CSM277563R1801	0.007	10
4	773436	E 9F10 AM4	2CSM277343R1801	0.007	10
6	771234	E 9F10 AM6	2CSM277123R1801	0.007	10
8	587330	E 9F10 AM8	2CSM258733R1801	0.007	10
10	575535	E 9F10 AM10	2CSM257553R1801	0.007	10
12	563730	E 9F10 AM12	2CSM256373R1801	0.007	10
16	586432	E 9F10 AM16	2CSM258643R1801	0.007	10
20	574637	E 9F10 AM20	2CSM257463R1801	0.007	10
25	562832	E 9F10 AM25	2CSM256283R1801	0.007	10
32	775539	E 9F10 AM32	2CSM277553R1801	0.007	10



E 9F 14 aM 14 x 51 mm cylindrical fuses

Rated current In [A]	Bbn 8012542 EAN	Description		Piece weight [kg]	Package
		Type	ABB code		
1	575337	E 9F14 AM1	2CSM257533R1801	0.018	10
2	563532	E 9F14 AM2	2CSM256353R1801	0.018	10
4	586234	E 9F14 AM4	2CSM258623R1801	0.018	10
6	574439	E 9F14 AM6	2CSM257443R1801	0.018	10
8	562634	E 9F14 AM8	2CSM256263R1801	0.018	10
10	775331	E 9F14 AM10	2CSM277533R1801	0.018	10
12	773139	E 9F14 AM12	2CSM277313R1801	0.018	10
16	770930	E 9F14 AM16	2CSM277093R1801	0.018	10
20	587033	E 9F14 AM20	2CSM258703R1801	0.018	10
25	575238	E 9F14 AM25	2CSM257523R1801	0.018	10
32	563433	E 9F14 AM32	2CSM256343R1801	0.018	10
40	586135	E 9F14 AM40	2CSM258613R1801	0.018	10
45	574330	E 9F14 AM45	2CSM257433R1801	0.018	10
50	562535	E 9F14 AM50	2CSM256253R1801	0.018	10



E 9F 22 aM 22 x 58 mm cylindrical fuses

Rated current In [A]	Bbn 8012542 EAN	Description		Piece weight [kg]	Package
		Type	ABB code		
6	586036	E 9F22 AM6	2CSM258603R1801	0.048	10
8	574231	E 9F22 AM8	2CSM257423R1801	0.048	10
10	562436	E 9F22 AM10	2CSM256243R1801	0.048	10
12	775133	E 9F22 AM12	2CSM277513R1801	0.048	10
16	772934	E 9F22 AM16	2CSM277293R1801	0.048	10
20	770732	E 9F22 AM20	2CSM277073R1801	0.048	10
25	774938	E 9F22 AM25	2CSM277493R1801	0.048	10
32	772736	E 9F22 AM32	2CSM277273R1801	0.048	10
40	770534	E 9F22 AM40	2CSM277053R1801	0.048	10
50	594130	E 9F22 AM50	2CSM259413R1801	0.048	10
63	582335	E 9F22 AM63	2CSM258233R1801	0.048	10
80	570530	E 9F22 AM80	2CSM257053R1801	0.048	10
100	595434	E 9F22 AM100	2CSM259543R1801	0.048	10
125	583639	E 9F22 AM125	2CSM258363R1801	0.048	10

Technical specifications

Rated voltage	[V]	400, 500, 690 AC
Rated current	[A]	0.5...125
Breaking capacity	[kA]	20, 120
Overall dimensions	[mm]	8.5 x 31.5, 10.3 x 38, 14 x 51, 22 x 58
Weight	[g]	4, 7, 18, 48
Marks		LLOYD, BV
Standards		IEC 60269-2; ROHS 2002/98/CE

E 9F aM cylindrical fuses

Delayed protection for motor starts

E 9F 8 aM 8.5 x 31.5 mm cylindrical fuses

Type	Rated current [A]	Rated voltage [V AC]	Breaking capacity [kA]
E 9F1 AM1	1	400	20
E 9F8 AM2	2	400	20
E 9F8 AM4	4	400	20
E 9F8 AM6	6	400	20
E 9F8 AM8	8	400	20
E 9F8 AM10	10	400	20

E 9F 10 aM 10.3 x 38 mm cylindrical fuses

Type	Rated current [A]	Rated voltage [V AC]	Breaking capacity [kA]
E 9F10 AM05	0.5	500	120
E 9F10 AM1	1	500	120
E 9F10 AM2	2	500	120
E 9F10 AM4	4	500	120
E 9F10 AM6	6	500	120
E 9F10 AM8	8	500	120
E 9F10 AM10	10	500	120
E 9F10 AM12	12	500	120
E 9F10 AM16	16	500	120
E 9F10 AM20	20	500	120
E 9F10 AM25	25	400	120
E 9F10 AM32	32	400	120

E 9F 14 aM 14 x 51 mm cylindrical fuses

Type	Rated current [A]	Rated voltage [V AC]	Breaking capacity [kA]
E 9F14 AM1	1	690	120
E 9F14 AM2	2	690	120
E 9F14 AM4	4	690	120
E 9F14 AM6	6	690	120
E 9F14 AM8	8	690	120
E 9F14 AM10	10	690	120
E 9F14 AM12	12	690	120
E 9F14 AM16	16	690	120
E 9F14 AM20	20	690	120
E 9F14 AM25	25	690	120
E 9F14 AM32	32	500	120
E 9F14 AM40	40	500	120
E 9F14 AM50	50	500	120

E 9F 22 aM 22 x 58 mm cylindrical fuses

Type	Rated current [A]	Rated voltage [V AC]	Breaking capacity [kA]
E 9F22 AM6	6	690	120
E 9F22 AM8	8	690	120
E 9F22 AM10	10	690	120
E 9F22 AM12	12	690	120
E 9F22 AM16	16	690	120
E 9F22 AM20	20	690	120
E 9F22 AM25	25	690	120
E 9F22 AM32	32	690	120
E 9F22 AM40	40	690	120
E 9F22 AM50	50	690	120
E 9F22 AM63	63	690	120
E 9F22 AM80	80	690	120
E 9F22 AM100	100	500	120
E 9F22 AM125	125	500	120

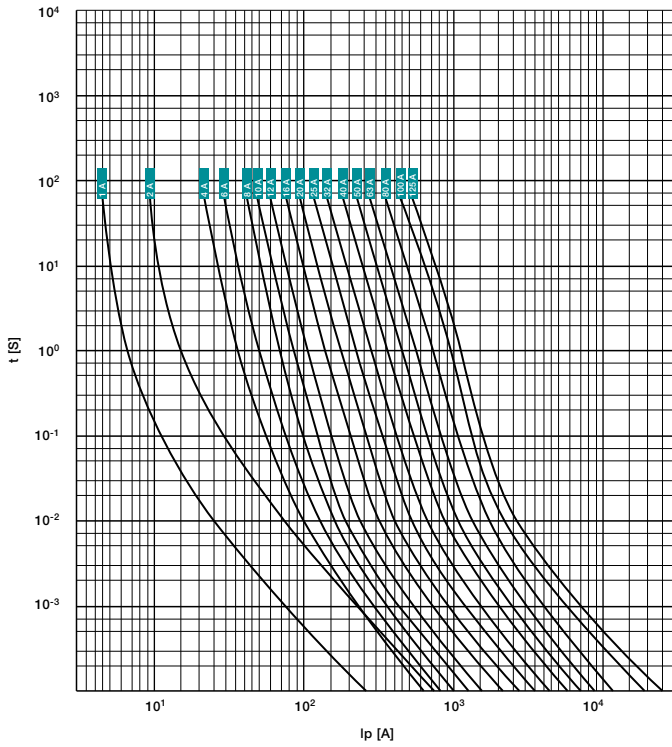
It is important to make sure that the power dissipated by the fuse does not exceed the limit imposed by the fuseholder in which it is installed. The maximum power dissipation values, in accordance with the specifications of the E 90 fuseholders series and IEC 60269-2 standard, are highlighted in green.

Power dissipation [W]				
In [A]	Size [mm]			
	8.5 x 31.5	10.3 x 38	14 x 51	22 x 58
0.5		0.70		
1	0.09	0.10	0.13	
2	0.15	0.14	0.18	
4	0.26	0.28	0.28	
6	0.35	0.38	0.42	0.45
8	0.47	0.55	0.55	0.60
10	0.55	0.62	0.65	0.75
12	0.7	0.82	0.75	0.85
16		0.87	1.05	1.15
20		1.05	1.30	1.35
25		1.20	1.55	1.70
32		1.80	2.05	2.20
40			2.65	2.70
45			2.85	-
50			2.95	3.60
63				4.80
80				6.20
100				6.65
125				9.90

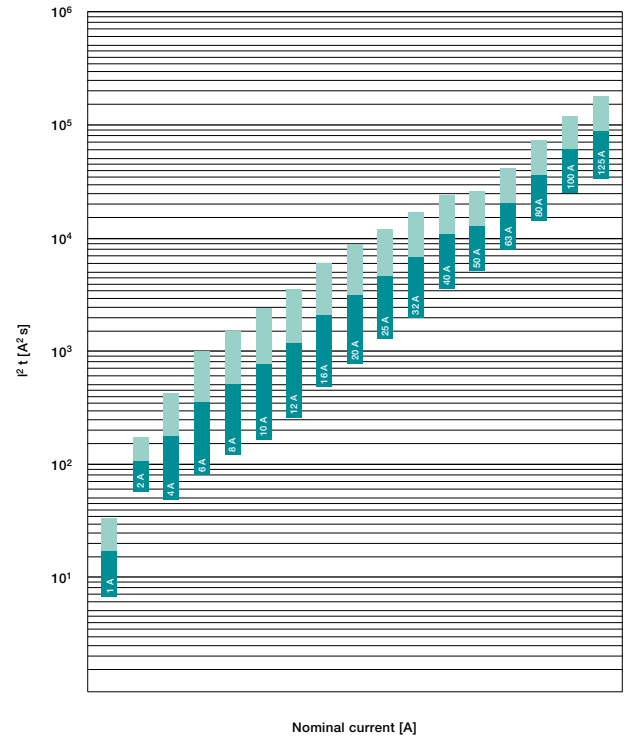
E 9F aM cylindrical fuses

Delayed protection for motor starts

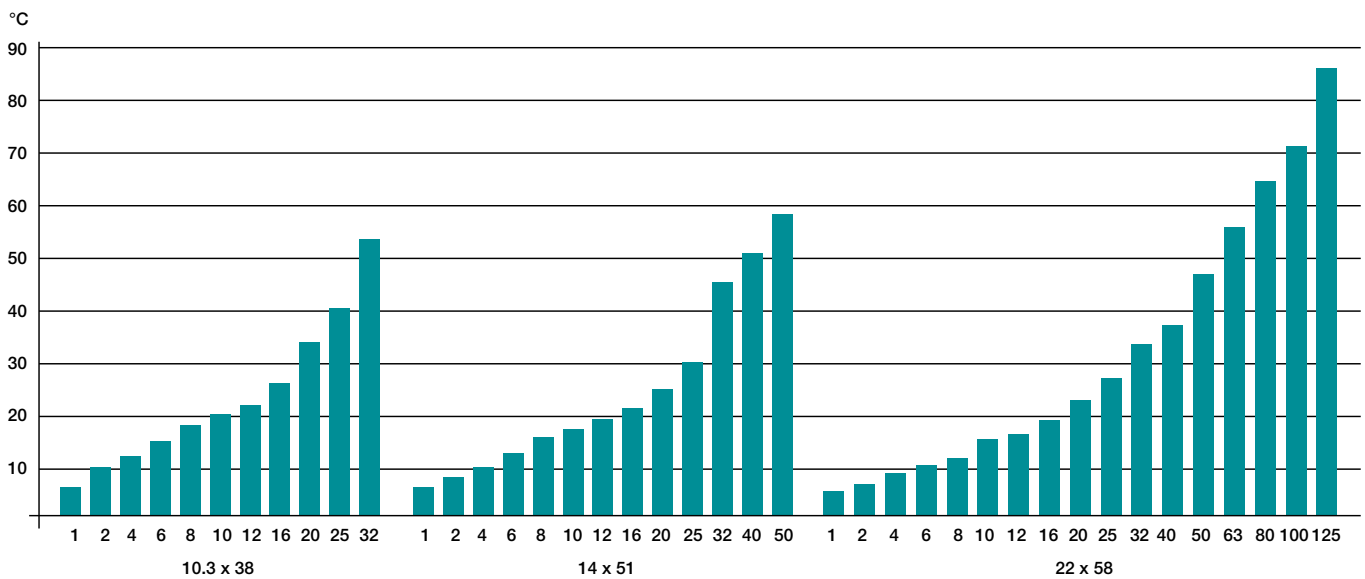
Characteristic tI



Characteristic I^2t



Temperature increase



Maximum cable length according to the rated current and section of the conductor

Copper conductor section [mm ²]	Rated current In [A] of aM fuses									
	16	20	25	32	40	50	63	80	100	125
1.5	55/64	37-45	25/30	15/20						
2.5	116	84/94	58/68	40/49	26/32	17/20				
4	181	147	118	84/95	58/68	42/48	28/33	18/23		
6	273	223	178	139	105/117	79/89	55/64	37/42	26/31	14/20
10				227	181	147	113/125	80/94	57/69	40/47
16						236	189	151	120	83/97
25								231	185	147
35									262	210

Use this table to find the cable length, in meters, that is protected by a fuse.

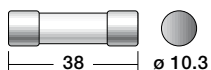
Just cross the rated current of the fuse (in the columns) with the section of the conductor (on the lines). The resulting number corresponds to the protected length of the conductor: for example, a 32 A fuse can protect up to 139 meters of 6 mm² section cable. When there are two values, it means that the maximum length of the cable is between the two numbers given in the table.

E 9F gPV cylindrical fuses

The best protection for direct current photovoltaic installations

The E 9F PV series of cylindrical fuses has been specifically designed for protecting direct current circuits up to 1000 V.

Available in the 10.3 x 38 mm size for up to 30 A rated current values, they are the best way to protect the strings, inverters and surge arresters in photovoltaic installations according to IEC 60269-6 "Supplementary requirements for fuse-links for the protection of solar photovoltaic energy systems".



E 9F gPV 10.3 x 38 mm cylindrical fuses

Rated current In [A]	Bbn 8012542 EAN	Description Type	ABB code	Piece weight [Kg]	Package
1	134565	E 9F1 PV	2CSM213456R1801	0.007	10
2	134664	E 9F2 PV	2CSM213466R1801	0.007	10
3	134763	E 9F3 PV	2CSM213476R1801	0.007	10
4	134862	E 9F4 PV	2CSM213486R1801	0.007	10
5	134961	E 9F5 PV	2CSM213496R1801	0.007	10
6	135067	E 9F6 PV	2CSM213506R1801	0.007	10
7	135166	E 9F7 PV	2CSM213516R1801	0.007	10
8	135265	E 9F8 PV	2CSM213526R1801	0.007	10
10	135364	E 9F10 PV	2CSM213536R1801	0.007	10
12	135463	E 9F12 PV	2CSM213546R1801	0.007	10
15	135562	E 9F15 PV	2CSM213556R1801	0.007	10
20	135661	E 9F20 PV	2CSM213566R1801	0.007	10
25	135760	E 9F25 PV	2CSM213576R1801	0.007	10
30	135869	E 9F30 PV	2CSM213586R1801	0.007	10

Technical specifications

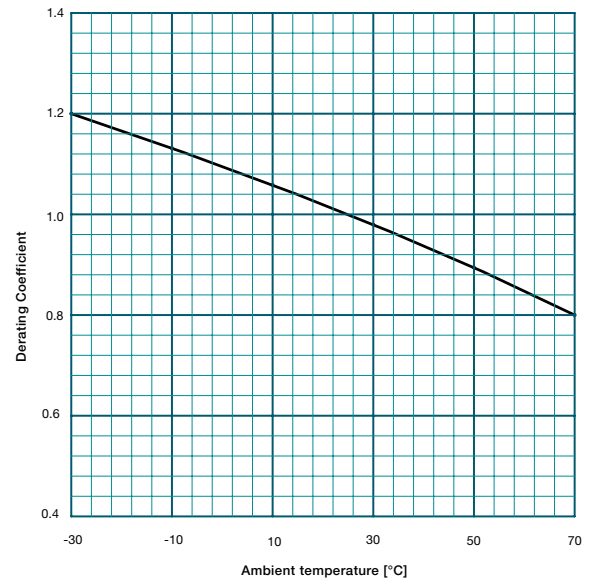
Rated voltage	[V]	1000 DC
Rated current	[A]	1...30
Breaking capacity	[kA]	10
Minimum breaking capability		from 1A to 7A = 1.3 x In from 8A to 30A = 2.0 x In
Dimensions	[mm]	10.3 x 38
Weight	[g]	7
Standards		IEC 60269-6; ROHS 2002/98/CE

E 9F gPV 10.3 x 38 mm cylindrical fuses

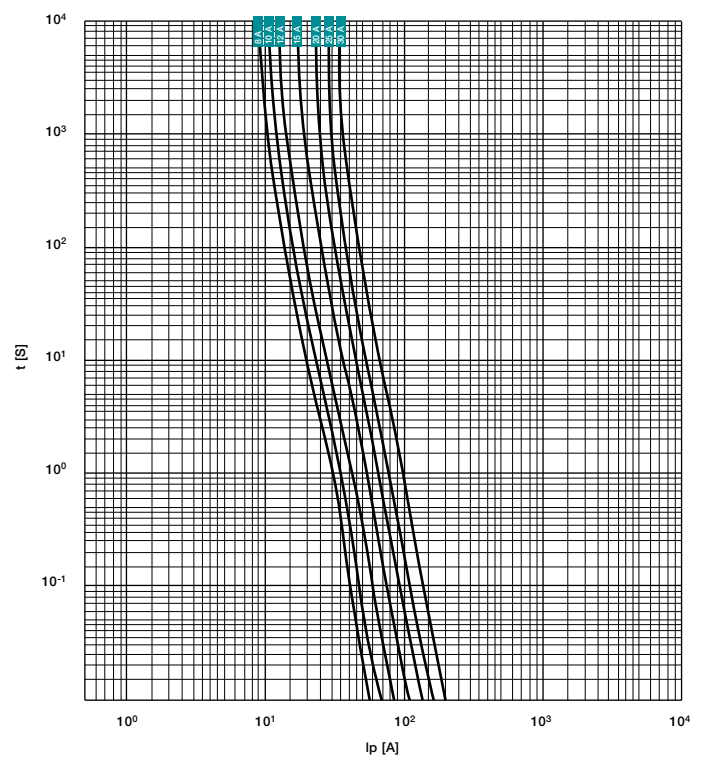
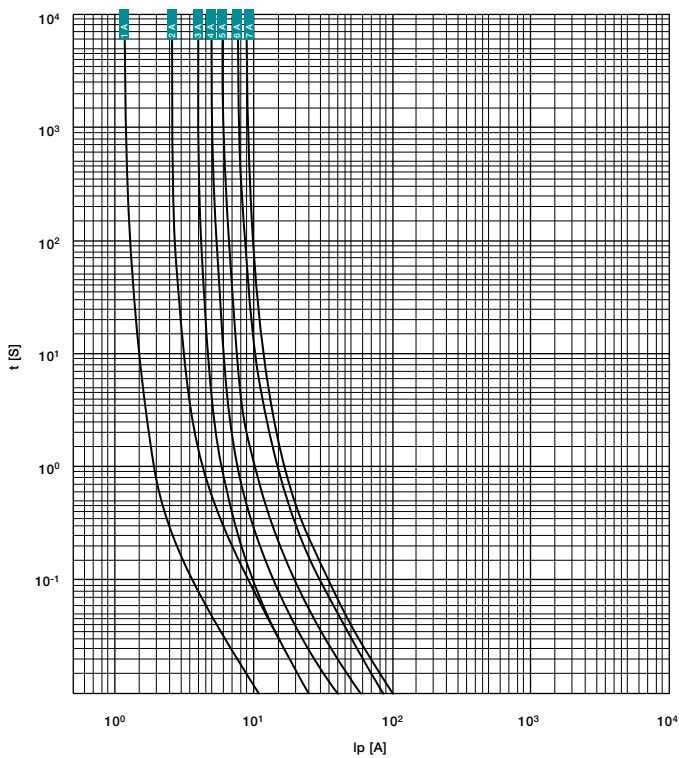
Type	Rated current [A]	Dissipated power 0.7 In [W]	Dissipated power 0.8 In [W]	Dissipated power In [W]
E 9F1 PV	1	0.125	0.175	0.25
E 9F2 PV	2	0.160	0.250	0.32
E 9F3 PV	3	0.66	0.87	1.36
E 9F4 PV	4	0.69	0.8	1.25
E 9F5 PV	5	0.59	0.73	1.12
E 9F6 PV	6	0.42	0.67	1.05
E 9F7 PV	7	0.40	0.64	1
E 9F8 PV	8	0.77	0.88	1.48
E 9F10 PV	10	0.67	0.9	1.5
E 9F12 PV	12	0.72	1	1.8
E 9F15 PV	15	0.9	1.3	2.2
E 9F20 PV	20	1.1	1.5	2.8
E 9F25 PV	25	1.3	1.8	3
E 9F30 PV	30	1.5	1.9	3.7

The power dissipation of the fuse cannot exceed the maximum power dissipation accepted by the fuseholder.

Derating in combination with Ambient Temperature



Time/current tripping characteristics



Questions & answers

Technical and regulatory details concerning the E 90 range

IEC 60947-3: switches, disconnectors, switch-disconnectors and fuse-combination units

This standard establishes the requirements of a device to ensure its suitability for disconnection and operation.

Disconnector:

A disconnector is a mechanical control device which, when open, meets the prescriptions for the disconnection function laid down by the international IEC 60947-3 standard. Opening a disconnector ensures that downstream the circuit is electrically isolated from upstream. This condition is necessary if you need to operate on a network component, e.g. during maintenance. Pursuant to the IEC 60364 standard, any maintenance operations on the installation are prohibited unless circuits have been previously disconnected.

Fuse-disconnector:

This defines a fuseholder that also performs disconnecting functions. Not all fuseholders are also disconnectors: to meet this definition they must meet the requirements and pass the tests provided for in the IEC 60947-3 standard.

Fuse-switch-disconnector:

According to the IEC 60947-3 standard, this definition concerns a fuse-disconnector that enables switching under load. Not all fuse-disconnectors enable this operation: to be considered as a fuse-switch-disconnector a device must have utilization category equal to AC-21B or above.

Utilization categories:

Not all devices intended for disconnection have the same performance. The type of operation allowed depends on a designation that specifically defines the methods of use, i.e. the utilization category.

This identifies:

- The nature of current (AC/DC)
- The type of switching allowed (no load, resistive loads, highly inductive loads, etc.)
- The operation frequency

E 90 fuse-switch-disconnectors have AC-22B utilization category up to 400V and utilization category AC-20B up to 690 V. The E 90 PV fuse-disconnectors have DC-20B utilization category. E 90 50/125 fuse-disconnectors have utilization category AC-20B.

Current nature	Utilization category		Typical applications
	A	B	
Alternating current	AC-20A	AC-20B	Connecting and disconnecting under no-load conditions
	AC-21A	AC-21B	Switching of resistive loads including moderate overloads
	AC-22A	AC-22B	Switching of mixed resistive and inductive loads, including moderate overload
	AC-23A	AC-23B	Switching of motor loads or other highly inductive loads
Direct current	DC-20A	DC-20B	Connecting and disconnecting under no-load conditions
	DC-21A	DC-21B	Switching of resistive loads including moderate overloads
	DC-22A	DC-22B	Switching of mixed resistive and inductive loads, including moderate overloads (e.g. shunt motors)
	DC-23A	DC-23B	Switching of highly inductive loads? (e.g. series motors)

Which loads can be disconnected using a product with AC-22B utilization category?

The AC-22B utilization category allows occasional operation of mixed, resistive and inductive loads with moderate overloads in alternating current circuits. Mixed loads include: transformers, corrected motors, capacitor batteries, discharge lamps, heating, etc.

Which loads can be disconnected using a product with AC-20B utilization category?

The AC-20B utilization category does not allow operation under load. Disconnection is possible only by first disconnecting the load through an appropriate switch.

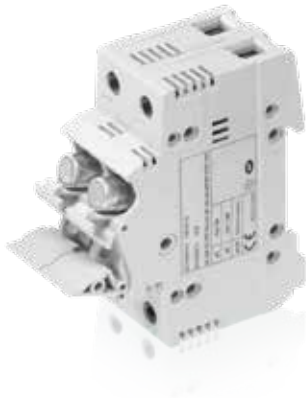
IEC 60269-1: Fuses with voltage not exceeding 1000 V in alternating current and 1500 V in direct current

This standard establishes the requirements of low voltage fuses, and as a result the requirements of fuseholders as devices intended to accommodate fuses.

This standard includes two different sections, with different requirements depending on the type of individual using the equipment:

IEC 60269-2: supplementary requirements for fuses for use by skilled persons (mainly for industrial application).

IEC 60269-3: supplementary requirements for fuses for use by unskilled persons (mainly for household and similar applications).



What is the difference between a IEC 60947-3-compliant fuseholder and a IEC 60947-2-compliant fuseholder?

These are two complementary standards: IEC 60269-2 establishes the characteristics of fuses, and, from these general requirements for fuseholders are derived. It is the reference standard for overcurrent protection but not for disconnection and switching.

Are fuseholders marked UR and UL equivalent to each other?

They are different products and they comply with equally different requirements. E 90/32 switch disconnectors conform to IEC standards and accommodate midget fuses. However, since they are recognized by the UL laboratories, by means of the UR mark, they can be used as components in UL-certified machines designed for the American market.

On the other hand, E 90/30 CC fuseholders are specifically designed and tested in accordance with the American standards. They are able to accommodate Class CC cylindrical fuses, which possess particular limitation characteristics. This means that it is forbidden to use 10.3 x 38 fuses that conform to IEC standards in E 90/30 CC fuseholders.

Questions & answers

Technical and regulatory details concerning the E 9F range

Maximum rated current for cylindrical fuses according to IEC 60269-2

Size of fuse [mm]	400 V a.c.		500 V a.c.		690 V a.c.	
	gG	aM	gG	aM	gG	aM
	I_n [A]					
8.5 x 31.5	25	12	-	-	-	-
10.3 x 38	32	32	25	20	16	12
14 x 51	-	-	50	50	50	40
22 x 58	-	-	100	100	80	80

Maximum rated current for fuse holders according to IEC 60269-2

Fuse size [mm]	I_n [A]
8.5 x 31.5	25
10.3 x 38	32
14 x 51	50
22 x 58	100

The E 90 series were designed and certified in accordance with the IEC 60269-2 standard which sets forth the maximum rated current values envisaged for fuses and fuseholders as summarized in the tables above. Therefore, the characteristics according to which the units were certified are shown on their rating plates.

Can fuses with rated current values higher than the one indicated in the table be used?

For example, can a 22 x 58 mm 125 A fuse be used in a E 90/125 fuseholder?

Yes, in compliance with the instructions provided by the manufacturer, a fuse with a higher rated current than the one indicated in the tables above can be used: it is necessary to verify that the power dissipation value of the fuse does not exceed the maximum acceptable power value of the fuseholder. In this specific case, if a 22 x 58 mm fuse used at 125 A dissipates a maximum power which is equal to or less than 9.5 W, it can be used in an E 90 125 fuseholder at a rated current of 125 A.

Since the above statement is generally valid for aM-type fuses, it has not to be forgotten the need to associate to it an overload protection devices. In fact, the aM-type fuses, unlike the gG-type ones, are designed to provide protection only against short-circuits and would act on overloads only after a long time, thus pushing the product beyond its own physical limits, beyond which it would no longer be possible to guarantee its proper operation.

Can instead, a 10.3 x 38 mm 32 A gG fuse be used in a 10.3 x 38 mm E 90/32 fuseholder with a rated voltage exceeding 400 V?

In this specific case, an E 9F10 GG32 fuse dissipates 2.8 W at 400 V rated voltage. Since an E 90/32 series fuseholder for 10.3 x 38 mm fuses achieves 3 W thermal dissipation, the fuse in question can be used at 400 V rated voltage or less. On the other hand, use of rated voltage exceeding 400 V fails to allow the equipment to comply with the maximum dissipated power limit.

Maximum values of rated power dissipation of a fuse-link according to IEC 60269-2.

Characteristic curve	Size of fuse			
	8.5 x 31.5	10.3 x 38	14 x 51	22 x 58
gG	2.5 W	3 W	5 W	9.5 W
aM	0.9 W	1.2 W	3 W	7 W
gPV		3 W		

The table above gives the maximum dissipated power values of the fuses, considering their size and characteristic curve, and at the same time the minimum power acceptance to be tolerated by a fuseholder.

The rated acceptable power dissipation of a fuseholder is displayed in the next table.

Size of fuse [mm]	8.5 x 31.5	10.3 x 38	14 x 51	22 x 58
Maximum acceptable power dissipation	2.5 W	3 W	5 W	9.5 W



E 90 Wizard

E 90 Wizard is an APP to easily select fuse and fuse holder codes in few simple steps wherever you are.

E 90 Wizard helps you to select ABB codes for E 90 and E 9F series for all the applications: industrial, residential, photovoltaic and North American markets.

In few taps E 90 Wizard can provide you the right code, listing you technical characteristics and documentation links.



Contact us

The data and illustrations are not binding. We reserve the right to modify the contents of this document on the basis of technical development of the products, without prior notice.

Copyright 2014 ABB. All rights reserved.

2CSC44002B0204 - 11/2014 - 2.000 CAL.